

SHRINK WRAPPER

B34/SZ-34 SEMI-AUTOMATIC SHRINK WRAPPING SYSTEM



Wrapping System provides any packaging line with more efficient end-user product handling. This System is designed for stand alone or loose products that require a 32" wide or less roll of film with a maximum roll diameter of 12"

An operator manually loads and pushes products onto the stainless steel dead plate and then activates the wrapping mechanism by pressing twin (safety) push buttons. Wrapped products then move into the Shrink Tunnel on the variable speed conveyor where consistent fan-forced heat is applied. Finished packages exit onto a conveyor or accumulation station suited to your needs.

Add various options to the B34/SZ-34 Semi-Automatic Shrink Wrapping System such as increased Jaw Height, Tunnel Chamber Height, Tunnel Chamber length, the Manual Product Pusher Arm Package, Package Cooling Fan, and a wide variety of exit conveyors to increase efficiency



SPECIFICATION

B34 SLEEVE WRAPPER

Standard Construction: Heavy duty welded tubular steel

Production Rate: Up to 10 packages/minute

Seal Head:

- 34"L x 16"H
- Teflon coated
- Electronic time/temperature controller
- Maximum temperature fluctuations of 2°C
- Air operated seal head running on linear bearings with air operated lower seal jaw

Infeed: Manually loaded stainless steel dead plate

Discharge: Variable speed DC driven conveyor

Power Requirement: 220VAC, single phase, 60Hz

Air Requirement: 8CFM @ 75PSI

Standard Features:

- Allen-Bradley PLC
- Low Film Indicator

SZ-34 SHRINK TUNNEL

Standard Construction: Heavy duty welded steel frame with adjustable height

Production Rate: Up to 10 packages/minute

Shrink Tunnel Chamber:

- 42"L x 34"W x 16"H

Conveyor:

- Variable speed, 1/4 HP motor
- Steel rollers covered in silicone tubing
- Adjustable 1" diameter rollers or high temp polymer mesh belt

Airflow:

- Variable speed, high velocity turbo blower
- Side baffles change flow pattern for varying types of package

Power Requirement: 220/440VAC, 3 phase, 60Hz

Air Requirement: Not required

SHRINK WRAPPER

B34/SZ-34 SEMI-AUTOMATIC SHRINK WRAPPING SYSTEM



OPTIONS

B34 SLEEVE WRAPPER

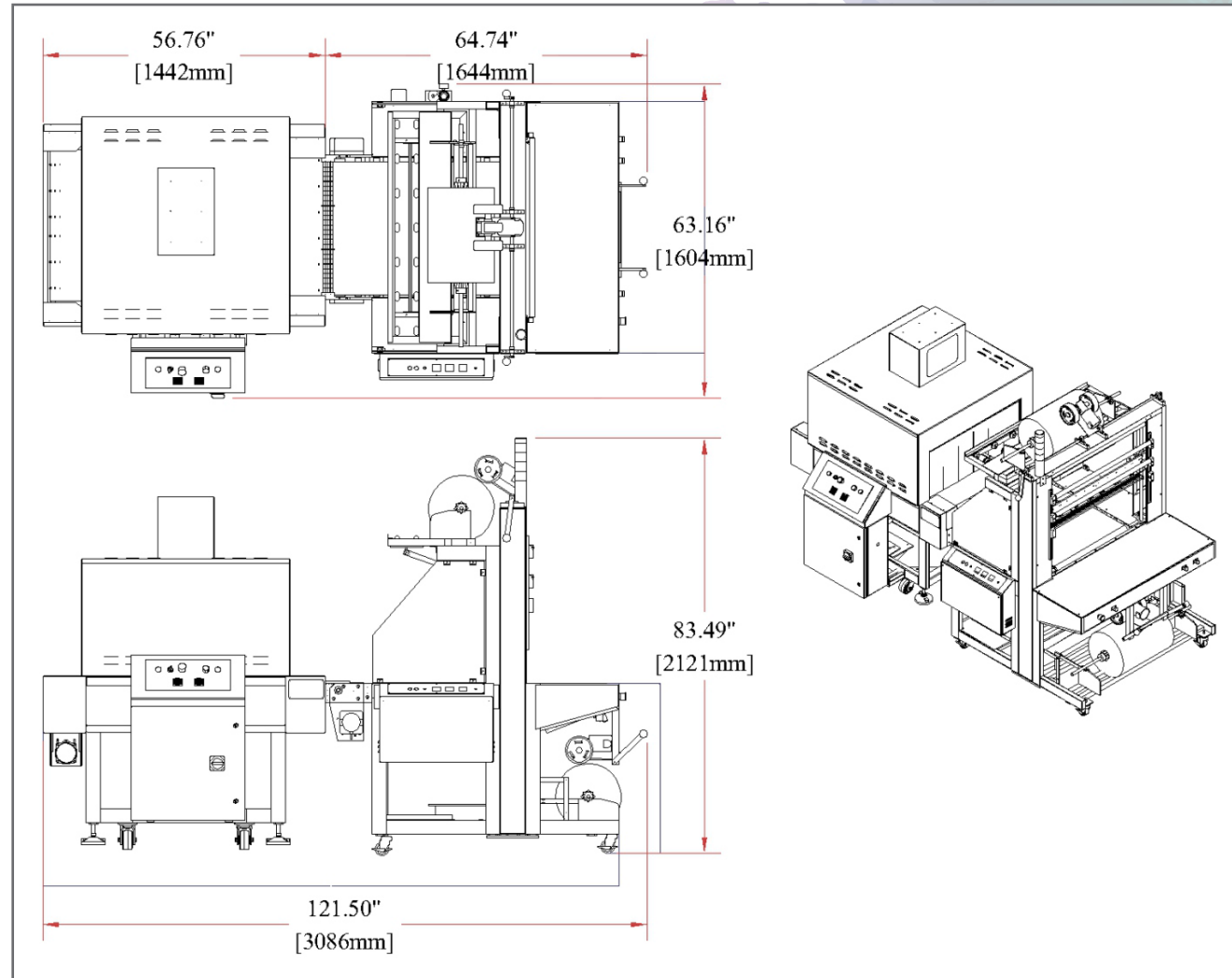
- Manual Product Pusher Arm Package
- Jaw Height Upgrade to 20" or 24"
- Motorized Film Jib Crane
- Casters

SZ-34 SHRINK TUNNEL

- Tunnel Chamber Height Upgrade to 20" or 24"
- Extended Tunnel Chamber
- Package Cooling Fan
- Casters

Use the following formula to determine required film width for standard bullseye style wrapping:

$$\text{Length} + \frac{1}{2} \text{Height} = \text{Minimum film width}$$



- Complete line of filling and packaging solutions
- Standard filling machines in stock and ready to ship
- Economical prices, installation services and excellent customer service

1500 Lake Street, La Porte, Indiana 46350
Local & Outside US: 219-369-4131
Toll Free: 866-369-9030
Fax: 574-975-2711

sales@apacks.com
www.apacks.com